

MR-Series

ISOPur MR-Series Fluid Purification

Treatable Fluids

- Lubricating oil
- Hydraulic oil
- Phosphate ester
- Machining oil
- Diesel fuel
- Vegetable oil
- EDM fluid
- Dielectric fluids
- Turbine oil
- Many other non-conducting fluids



The ISOPur **MR-Series** is the smart purification solution for fluid flow rates in the 200 to 600 GPH (750 to ~2300 LPH) range. The MR-Series contains ISOPur's patented Balanced Charge Agglomeration (BCATM) technology, which maintains hydraulic and lubricating fluids in pristine condition and *prevents/removes the buildup of sludge and varnish*. BCATM is paired with the intelligence of SmartPakTM, which automatically senses fluid condition and adjusts accordingly.

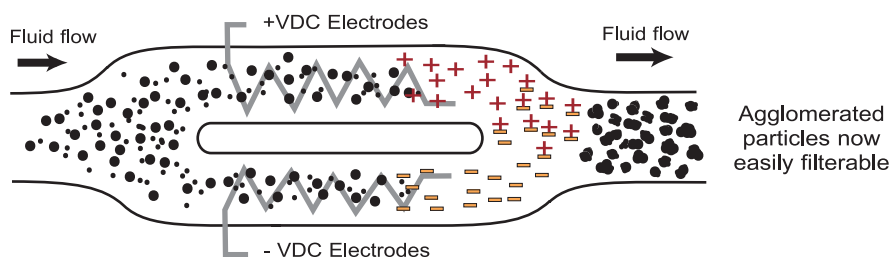
What is BCATM?

Balanced Charge Agglomeration (BCATM) works by pumping non-conducting fluids past electrodes that ionize contamination particles equally positive (+) and negative (-). The oppositely charged particles are mixed, attract to each other, and grow in size. These agglomerated particles are then easily removed by traditional filtration methods.

MR-Series Features

- Contaminant removal to the sub-micron level
- Prevention and removal of sludge and varnish
- Removal of oxide insolubles and biological contamination
- Removal of ferrous and non-ferrous contamination
- Efficient and highly effective water removal with coalescer
- Highest flow rates in the industry

BCATM Process



MR-Series Standard Specifications



MR-Series PLC Display

SmartPak™ Features

SmartFlow

- Automatic temperature, pressure, & flow sensing
- Optimizes flow rate

Filter Minder

- Filter change auto-reminder
- Unusual flow/pressure alarms

SmartView

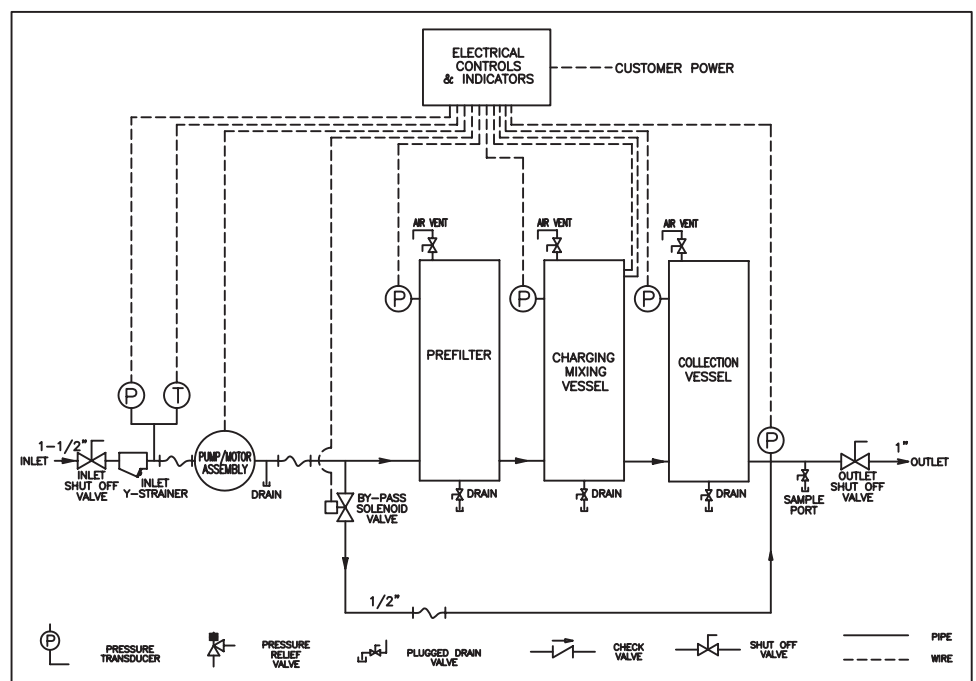
- Displays real-time conditions
- Easy custom programming



951-279-9830; Fax: 951-279-6706
www.globalindustrialsolutions.net

DS-MR-0506-0

	USA	International
Flow rate	200 to 600 GPH	750 to 2300 LPH
Dimensions (H x W x D)	64in x 30in x 18in	163cm x 76cm x 46cm
Servicing area (H x W x D)	72in x 42in x 30in	183cm x 107cm x 76cm
Filter change area	24in from top of unit	61cm
Weight dry	366 lbs	166 kg
Weight wet	414 lbs	188 kg
Pump discharge pressure	12 to 80 PSIG	0.8 to 5.5 Bars
Fluid temperature range*	65 to 200 F	18 to 93 C
Minimum fluid flash point	140 F	60 C
Pump type	Positive displacement	
Electric motor	ISOPur	
RPM	600 to 1900	
Power	1.0 hp	0.75 Kw
Mains supply (Volts/Hz)	115-480/60	230-400/50
Amps	Dedicated 15 Amp branch service	
Fluid viscosity*	2 to 220cSt at 40 C	
Ambient humidity range	Up to 95% non-condensing	
Pre-filter	ISOPur custom	
Collection cartridge	ISOPur custom	
Transportation & storage	0 to 132 F	-18 to 55 C
Suction connection	1.5" NPT	3.81 cm
Discharge connection	1" NPT	2.54 cm



*Contact an ISOPur representative for operation outside of recommended ranges.
ISOPur reserves the right to change specifications without notice.