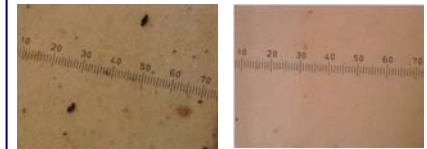


HIGH FLOW PORTABLE FILTRATION SYSTEM

The harmful effects of particulate contamination in hydraulic, lubrication, and fuel oils has been well documented. Global Industrial Solutions has developed a line of High Flow Portable Oil Filtration Systems to quickly and reliably remove particulate contamination from a variety of fluids, enabling end-users to extend the life of component parts, reduce maintenance costs and down-time, and maximize profitability. These systems are portable, and can be used for fluid transfer, high velocity oil flushing, or off-line kidney-loop filtration. Filter elements are available in a wide variety of micron sizes and media types to handle virtually any application.



ISO 32 Turbine Oil
 Left - Before Filtration:
 ISO 22/21/18
 Right - After Filtration:
 ISO 14/12/10



400 GPM Portable Filtration System

Standard Features:

- Positive Displacement Gear Pumps or High Head Pressure Centrifugal Pumps
- Variable Frequency Drives
- Electric Control Pane with Full Motor Control Functions, System Run & Alarm Indications

Flow Rates From 20-2000 GPM or Higher.

Achieve Very Low Particle Counts To Meet Or Exceed An ISO 16/13/10 Cleanliness Level.

Achieve Reynolds Number >4000 To Perform High Velocity Flushing Of Pipes.

Suitable For Use With:

- Hydraulic Oil
- Lubrication Oil (ISO 32 – ISO 680)
- Turbine Lube Oil
- Diesel Fuel
- EHC Fluid (Phosphate Ester)
- PAO Fluid

Filter Element Options:

High Efficiency Pleated Micro-glass Particulate Removal Filter Elements
 Available In Micron Sizes Ranging From 1-Micron To 25 Micron Beta_{≥200} per ISO 4572 (99.5% Efficient)

Nominally Rated Pleated Cellulose Filter Elements or Polyester Felt Bag Filters
 Cost Effective Way To Remove Large Amounts of Bulk Particulate Contamination From Very Dirty Systems

Electrical Specifications

Voltage: 480 VAC, 3 Ph, 60 Hz
(Other voltages are available upon request)

Motors: Premium Efficiency TEFC or
Explosion Proof (if required)

Control Panel: NEMA 4 or NEMA 7

Mechanical Specifications

Flow Rate Options: 20 GPM - 2000 GPM

Filter Housings: Multiple Configurations for
High Flow and Particulate Removal

Plugged Element Indication: Differential
pressure gauges and indicator lights provide
positive indication when the elements are
plugged and need to be changed.

Pump: Heavy-duty self-priming positive
displacement style with built in relief.

Connections: 1" to 8" NPT with Camlock or
Flanged Connections (Other Options Are
Available).

Power Cord: 25' / 7.62 meter SO Cord

Hoses: 20' Inlet and 20' Outlet Hoses
Standard

Oil Sample Ports: Upstream & Downstream
Sample Ports

Custom Options Are Available

**For technical support & applications
help, call us at (951) 279-9830.**



50 GPM Quad 840X Filtration System

SYSTEM ORDERING INFORMATION

Part-number Sequence:
HFFS- 50VFD-840X-480-N4-V

High Flow Filtration System	50 GPM Variable Frequency Drive	Single 840X Series Filter Housing	480 Volts 3 Phase	NEMA 4 Electrical	Viton Seals
-----------------------------------	--	---	-------------------------	----------------------	----------------

- Flow Rate Options from 20 to 2000 GPM
- Multi-Element Filter Housings in both Series & Parallel Configurations as well as duplex options.
- Voltage Options from 220 V / 1 Phase to 580 V / 3 Phase
- NEMA 4 Outdoor & NEMA 7 Explosion Proof Options
- Standard Seals are Viton (R) but may options exist

ELEMENT ORDERING INFORMATION

**Accepts the following 840X Series Filter Elements, Absolute
Rated @ Beta(c) ≥ 1000 per 16889 & Beta ≥ 200 per ISO 4572**
840X Series Part Numbers: OFS-840X-(**)B

** (micron options) = 1, 3, 6, 12, & 25
1 micron Beta ≥ 200 = 2.5 Micron Beta (c) ≥ 1000
3 micron Beta ≥ 200 = 5 Micron Beta (c) ≥ 1000
6 micron Beta ≥ 200 = 7 Micron Beta (c) ≥ 1000
12 micron Beta ≥ 200 = 12 Micron Beta (c) ≥ 1000
25 micron Beta ≥ 200 = 22 Micron Beta (c) ≥ 1000

We have a wide variety of lower cost nominally rated filter elements typically used on very dirty applications: Ask for our 840XP Series Filter Elements.

For water removal from Oils & Fuels, see our 840X-WB Series Filter Elements.